

Test Report

No. SZXEC2001068102

Date: 01 Jun 2020

Page 1 of 4

DURACELL

BERKSHIRE CORPORATE PARK, 14 RESEARCH DRIVE BETHEL, CT06801, USA

The following sample(s) was/were submitted and identified on behalf of the clients as : PROCELL PC1400 1.5V

SGS Job No. : RP20-010361 - SZ
 Model No. : PC1400
 Material No. : C(LR14)
 Country of Origin : China
 Date of Sample Received : 25 May 2020
 Testing Period : 25 May 2020 - 01 Jun 2020
 Test Requested : Selected test(s) as requested by client.
 Test Method : Please refer to next page(s).
 Test Results : Please refer to next page(s).
 Conclusion : The submitted battery sample does not exceed the limit mentioned in European Directive 2006/66/EC and its Article 4 amendment of Directive 2013/56/EU.

Signed for and on behalf of
 SGS-CSTC Standards Technical Services Co., Ltd. Shenzhen Branch



Andy Ni
 Approved Signatory



Unless otherwise agreed in writing, this document is issued by the Company subject to its General Conditions of Service printed overleaf, available on request or accessible at <http://www.sgs.com/en/Terms-and-Conditions.aspx> and, for electronic format documents, subject to Terms and Conditions for Electronic Documents at <http://www.sgs.com/en/Terms-and-Conditions/Terms-e-Documents.aspx>. Attention is drawn to the limitation of liability, indemnification and jurisdiction issues defined therein. Any holder of this document is advised that information contained hereon reflects the Company's findings at the time of its intervention only and within the limits of Client's instructions, if any. The Company's sole responsibility is to its Client and this document does not exonerate parties to a transaction from exercising all their rights and obligations under the transaction documents. This document cannot be reproduced except in full, without prior written approval of the Company. Any unauthorized alteration, forgery or falsification of the content or appearance of this document is unlawful and offenders may be prosecuted to the fullest extent of the law. Unless otherwise stated the results shown in this test report refer only to the sample(s) tested.

Attention: To check the authenticity of testing / inspection report & certificate, please contact us at telephone: (86-755) 8307 1443, or email: CN.Doccheck@sgs.com

SGS Bldg, No.4, Jianghao Industrial Park, No.430, Jihua Road, Bantian, Longgang District, Shenzhen, China 518129 t (86-755) 25328888 f (86-755) 83106190 www.sgsgroup.com.cn
 中国·深圳·龙岗区坂田吉华路430号江源工业园4栋SGS大楼 邮编: 518129 t (86-755) 25328888 f (86-755) 83106190 e sgs.china@sgs.com

Test Report

No. SZXEC2001068102

Date: 01 Jun 2020

Page 2 of 4

Test Results :

Test Part Description :

Specimen No.	SGS Sample ID	Description
SN1	SZX20-010681.002	"Battery"

Remarks :

- (1) 1 mg/kg = 1 ppm = 0.0001%
- (2) MDL = Method Detection Limit
- (3) ND = Not Detected (< MDL)
- (4) "-" = Not Regulated

European Directive 2006/66/EC and its Article 4 amendment of Directive 2013/56/EU- Heavy Metals Content in Batteries and Accumulators

Test Method : Acid digestion method, analysis was performed by ICP-OES.

Test Item(s)	Limit	Unit	MDL	002
Cadmium (Cd)	0.0020	%(w/w)	0.0010	ND
Lead (Pb)	-	%(w/w)	0.0010	ND
Mercury (Hg)	0.0005	%(w/w)	0.0001	ND

Notes :

- (1) Results shown are of total weight of the battery sample.
- (2) According to the European Directive 2006/66/EC and its Article 4 amendment of Directive 2013/56/EU, all types of battery shall include the chemical symbol Lead when containing more than 0.004% of Pb.



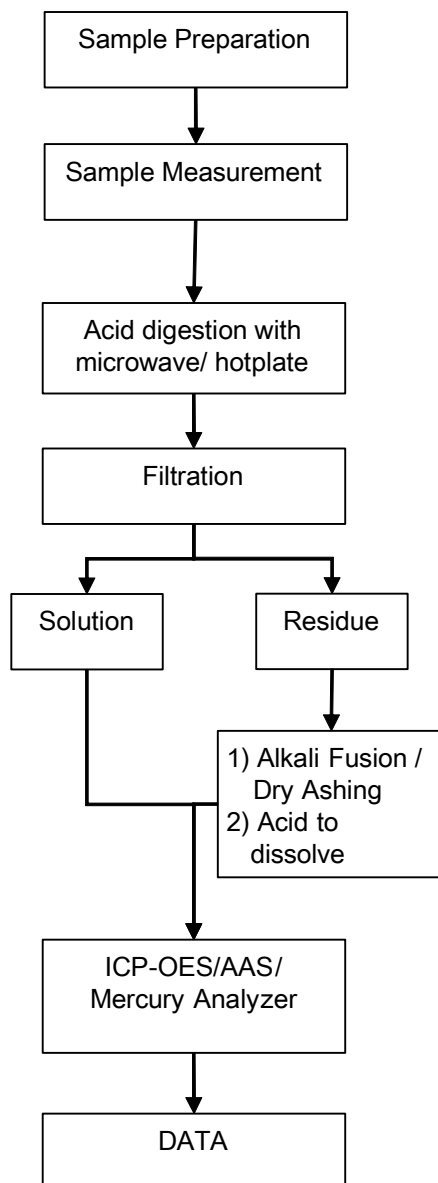
Unless otherwise agreed in writing, this document is issued by the Company subject to its General Conditions of Service printed overleaf, available on request or accessible at <http://www.sgs.com/en/Terms-and-Conditions.aspx> and, for electronic format documents, subject to Terms and Conditions for Electronic Documents at <http://www.sgs.com/en/Terms-and-Conditions/Terms-e-Documents.aspx>. Attention is drawn to the limitation of liability, indemnification and jurisdiction issues defined therein. Any holder of this document is advised that information contained hereon reflects the Company's findings at the time of its intervention only and within the limits of Client's instructions, if any. The Company's sole responsibility is to its Client and this document does not exonerate parties to a transaction from exercising all their rights and obligations under the transaction documents. This document cannot be reproduced except in full, without prior written approval of the Company. Any unauthorized alteration, forgery or falsification of the content or appearance of this document is unlawful and offenders may be prosecuted to the fullest extent of the law. Unless otherwise stated the results shown in this test report refer only to the sample(s) tested.

Attention: To check the authenticity of testing / inspection report & certificate, please contact us at telephone: (86-755) 8307 1443, or email: CN.Doccheck@sgs.com

SGS Bldg, No.4, Jianghao Industrial Park, No.430, Jihua Road, Bantian, Longgang District, Shenzhen, China 518129 t (86-755) 25328888 f (86-755) 83106190 www.sgsgroup.com.cn
 中国·深圳·龙岗区坂田吉华路430号江灏工业园4栋SGS大楼 邮编: 518129 t (86-755) 25328888 f (86-755) 83106190 e sgs.china@sgs.com

ATTACHMENTS

Battery Testing Flow Chart



Test Report

No. SZXEC2001068102

Date: 01 Jun 2020

Page 4 of 4

Sample photo:



SGS authenticate the photo on original report only

*** End of Report ***